

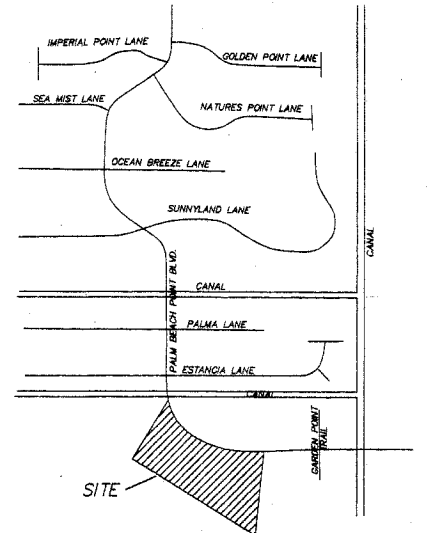
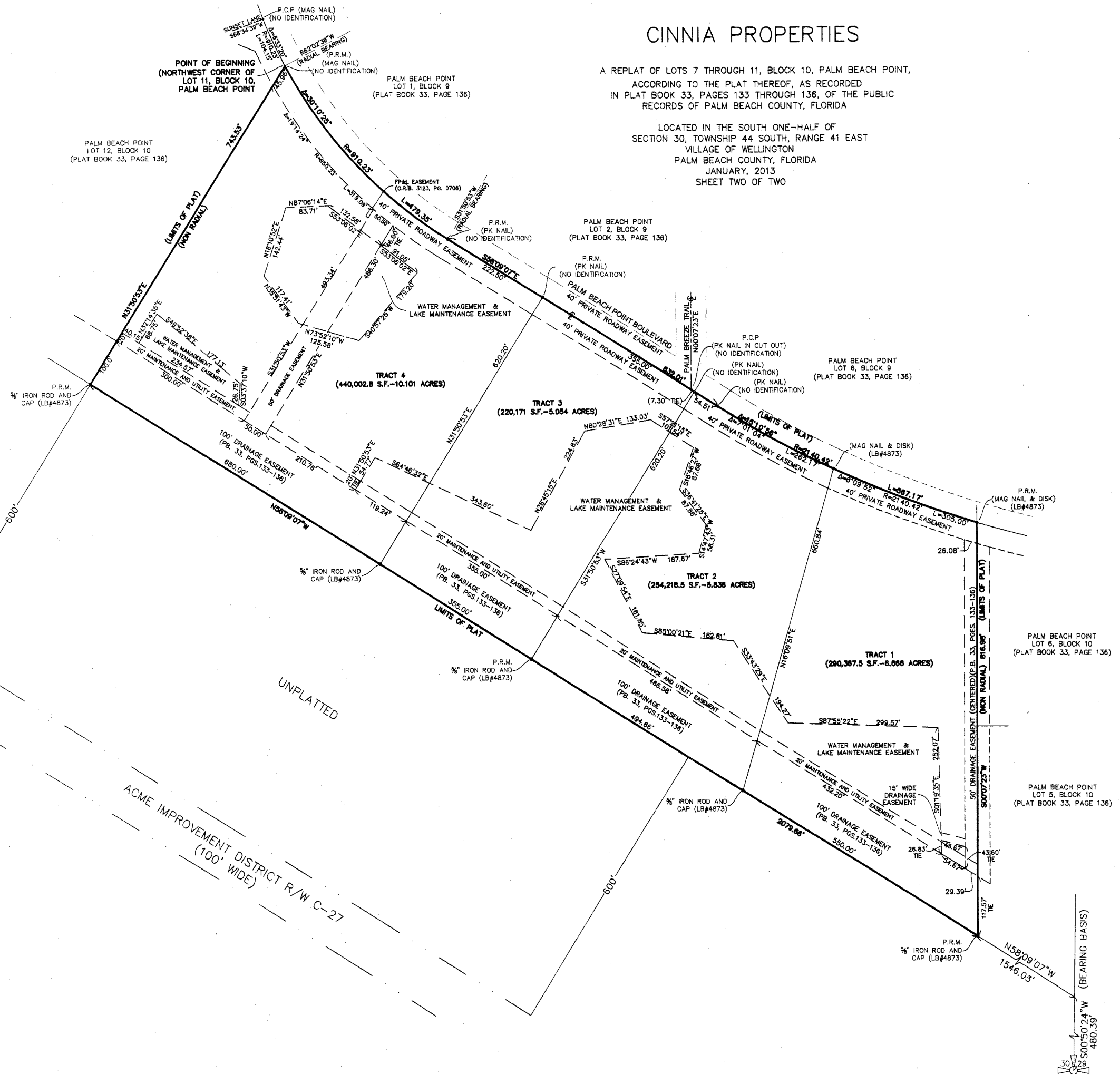
STATE OF FLORIDA  
COUNTY OF PALM BEACH  
This Plat was filed for record  
at \_\_\_\_\_ M. this \_\_\_\_\_ day  
of \_\_\_\_\_ 2013,  
and duly recorded in Plat Book  
No. \_\_\_\_\_ on page \_\_\_\_\_.

SHARON R. BOCK,  
Clerk Circuit Court  
& Comptroller  
By \_\_\_\_\_, D.C.

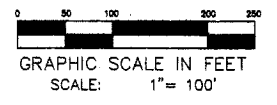
# CINNIA PROPERTIES

A REPLAT OF LOTS 7 THROUGH 11, BLOCK 10, PALM BEACH POINT,  
ACCORDING TO THE PLAT THEREOF, AS RECORDED  
IN PLAT BOOK 33, PAGES 133 THROUGH 136, OF THE PUBLIC  
RECORDS OF PALM BEACH COUNTY, FLORIDA

LOCATED IN THE SOUTH ONE-HALF OF  
SECTION 30, TOWNSHIP 44 SOUTH, RANGE 41 EAST  
VILLAGE OF WELLINGTON  
PALM BEACH COUNTY, FLORIDA  
JANUARY, 2013  
SHEET TWO OF TWO



LOCATION MAP not to scale



### LEGEND

- P.C.P.= Permanent Control Point
- P.R.M.= Permanent Reference Monument
- ⊙ = Centerline
- O.R.B.= Official Record Book
- PGS. = Pages
- PB = Plat Book

RICHARD G. RADER, PLS. FILE NO. 8256  
Florida Certificate No. 4861 (1-04-2013)

**J Development Services, Inc.**  
 EB#4873 LB#4873  
 12794 W. Forest Hill Boulevard  
 Suite 11-A Wellington, Florida, 33414  
 Fax: (561) 790-4488 (561) 790-4471